

MCS Configuration For:

Tony Rife
Caskey Printing, Inc.



8101 Cessna Ave - - Gaithersburg, MD 20879
Phone: 301-990-6500

Configuration

Date	Doc #
09/03/14	GC94141220

Quote # GC94141220

Qty	Description
-----	-------------

1

Falcon 2x2 (4" System 2 inch + 2 inch config)

\$26,500

\$26,500

Picture shown is a Falcon 2
printheads of 2" each



4" Inkjet Printing system including two 2 inch Falcon print heads.

The Falcon Inkjet printer system has additional capabilities which are unique in the industry.

- * Crisper fonts and graphics utilizing Enhanced Rasterization Technology (ETR)
- * The new Gigabit communication protocol provides bandwidth to allow up to 24" of Falcon print on one control system.
- * Falcon print heads can now be run alongside Eagle print heads under the same Raptor Software Controller.
- * A PDF workflow option is now available -- as well as the standard MCS GUI job setup and database connections.
- * Advanced WYSIWYG job layout, Remote job setup and Electronic print proofing are all included with the Raptor Software.

The new Falcon firmware provides advances in Input/Output capabilities and can trigger external auxiliary items such as sorting conveyers.

In addition to The Includes Raptor Software and controller with IMB/4-State barcode capability and print resolutions of 150/200/300/600x600DPI.

In 300x600DPI mode the Falcon systems can print #10 Envelopes at speeds of approximately 15,000 pph and at 22,000 pph for 200x600DPI resolution.

Includes Windows 7 compatible software, print head brackets, controller, encoder and sensor. The use of an MCS line conditioner is strongly recommended.

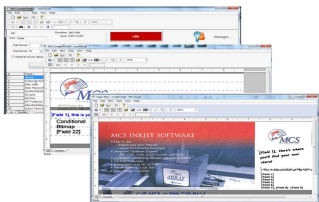
Qty

Description

1

MCS Raptor Controller Software

Screen captures of Raptor Software



The MCS Raptor Inkjet Controller is a new design that allows one controller to drive multiple MCS print technologies.

The Raptor Software Controller consists of the Raptor Software and a Windows 7 workstation computer with Gigabit Ethernet network connectivity.

Benefits of the Raptor:

- * Drive either - or both - Eagle and Falcon inkjet print systems
- * Control up to a total of 25" of print width
- * Smoother fonts and graphics with the MCS Enhanced Rasterization Technology (ETR)
- * Optional PDF workflow
- * Selectable ink-saving modes by object -- variable resolution modes
- * Reduced setup times -- produce setups for multiple printer configurations from one system
- * New GS1 Databar family of barcodes

The Software Controller brings forward the latest technology developments from the software that drove the Eagle Products and the previous Array printers. Features include:

- * True WYSIWYG print previewing with record scrolling
- * Electronic print-proofing and exporting of proofs to PDF and email
- * Remote job setup
- * Rotation of graphic elements by 1 degree increments, variable graphics -- perfect for "Store Locator Maps"
- * Extensive formatting of variable and fixed text using Windows standard TrueType fonts and font variations
- * Data compatibility with all common database formats, counters and optional PDF workflow.

See the MCS Raptor brochure for additional information.

1

Line / Voltage Conditioner

\$300

\$300

Line conditioner to regulate and isolate voltage irregularities -- from causing problems with Perfect Match, Inkjet or PC.

Most electronic power problems are caused by electronic "noise" and unstable voltages -- rather than power failures and unstable voltage is common in industrial environments.

This unit will reduce over-voltage and under-voltage issues such as brown-outs -- and thereby help provide stable power to your MCS electronic equipment. This functionality is more important than what a UPS (Uninterruptible Power Supply) can provide.



1

MCS 530 EV Transport

\$12,500

\$12,500

Shown is a 530 transport.

The MCS 530:

- * A high quality transport base with:
 - Full length Vacuum with MCS Distributed Vacuum system
 - Heat Resistant transport belts and table-top

Key Specifications

- * 72" Usable Transport Length -- Can be used inline with inserters/folders/etc. Accommodation for 6 inches of print
- * 110V
- * Electronics to integrate with MCS inkjets: Feeder Pause for Sort Control or Conveyor Speed-up signal for Sort Control



Qty

Description

1

Feeder extension for MCS 530 & 430 Transports

1

Windows 7 Computer with industrial mount for screen/keyboard

\$1,500

\$1,500

PC is equipped with a Gigabit Ethernet (for Falcon/Eagle Systems) enabling high-bandwidth data flow with inkjet controller. Comes ready for Raptor software and includes Windows 7 operating software The use of an MCS line conditioner is strongly recommended.



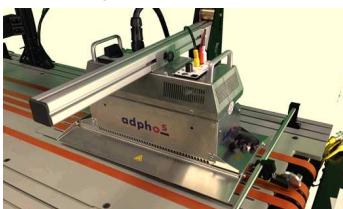
1

S-900 2nd Generation Infrared Dryer

\$8,500

\$8,500

Shown mounted on an MCS 530 transport.



NEW! The S-900 comes standard with an electronic piece detector to allow automatic shut-off of dryer when printed pieces are not passing underneath the dryer. This saves on belt wear and electricity!

The MCS S-900 Dryer uses novel 2nd Generation technology to enhance the effectiveness and speed of drying. The system uses a wavelength of light that is tuned for maximum absorption by the ink. The results of this system are faster drying speeds, higher resulting throughput from your system and less energy usage per printed piece.

Coupled with the latest ink formulations, the S-900 will now allow you to handle difficult to dry substrates (even some plastics) with greater ease. This can have a positive impact with the capability to add more revenue -- as well as lower costs.

The transport/base that the S-900 dryer is mounted on must be tolerant of the high levels of heat output possible from the S-900 dryer. The 525, 530, 330, 715, 915 and 1015 transports meet this requirement. Reduced heat settings may be required for transports with lower heat tolerances.

1

Installation & Training - Inkjet - 3 days

\$1,500

\$1,500

Installation of MCS Falcon inkjet onto MCS transport base - and connection with MCS Feeders and Conveyor

1

Trade in -

-\$11,366

-\$11,366

The printheads, dongle, computer, dryer and KR base to be traded in to MCS. Caskey will keep conveyor and feeder.

1

Special Payment Terms

* Customer will make equal payments to MCS (in addition to deposit received) of \$10,096.00 on the 1st day of each month following the installation of the system -- for 3 months. (the first payment will be due less than 1 month from installation)

* Customer will provide a "Landlord Waiver" and UCC to secure equipment

* System will be rented to customer until each payment is received (within 5 days of the agreed terms). System will remain the property of MCS until all payment conditions have been satisfied. If any payments are missed, MCS has the right to send the equipment back to MCS and keep all payments and deposit and equipment.



8101 Cessna Ave - - Gaithersburg, MD 20879
Phone: 301-990-6500

Quote # GC94141220

Qty

Description

Subtotal \$39,434

see note on taxes below

Ground Shipping \$950

This is a limited time offer which expires 7 days from 09/04/14

Total Excluding Tax \$40,384



Sold To: Caskey Printing, Inc.
Tony Rife
850 Vogelsong Road
York, PA 17404-1379

Phone: 717-764-4500
Fax:
Email: trife@caskeygroup.com

Ship To: Caskey Printing, Inc.
Tony Rife
850 Vogelsong Road
York, PA 17404-1379

Phone: 717-764-4500
Fax:
Email: trife@caskeygroup.com

Terms
1/4 with order, 25% 10/1/14, 25% 11/1/14, 25% 12/1/14

Rep	P.O. Number	Ship Via
Jim Harrigan		

Important: Service Update Connection

NOTE: Continual usage of the Raptor software requires a complimentary Software-service Update - either automatic or prompted via internet - at no charge. This option is included in this agreement by default. This option Includes free telephone support for software. Includes free minor version updates. Requires internet connection during the updating process.

The software-service update provides MCS a convenient way for both customers and MCS to lower the cost of support. In addition, MCS values the benefit of regular customer contact and the ability to gather usage statistics to help enhance product performance. Note: This is not a hardware service plan - rather, it is a software and telephone/internet update service. While MCS offers a free option for this process, the software license will expire and system won't be functional without this service.

Agreement of Quote/Proposal by Caskey Printing, Inc.

On Behalf of Caskey Printing, Inc., I hereby agree to the proposed equipment and terms as stated above in Quote GC94141220. The signature below and/or receipt of a formal Caskey Printing, Inc. purchase order authorizes the initiation of activity by MCS for Caskey Printing, Inc.

Name _____

Title _____

Signature _____ Date _____

Please Note: MCS will collect appropriate sales and use taxes in states where required. These taxes aren't shown on this quote -- but will be provided by invoice. All customers are responsible for ensuring they pay all applicable taxes.

Warranty : 90 Days for defective parts or workmanship on new equipment.

Delivery : Estimated: 4-6 weeks from acceptance at MCS Headquarters. 3rd Party Equipment may impact estimate.

Subtotal \$39,434

see note on taxes below

Ground Shipping \$950

Total Excluding Tax \$40,384

Customer is responsible for payment of all local and state sales and use taxes

Doc # GC94141220

Jim Harrigan

This is a limited time offer which expires 7 days from 09/04/14